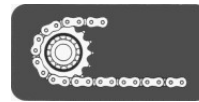


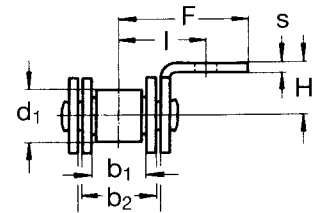
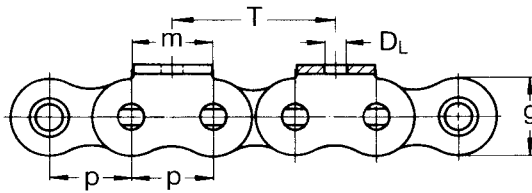
Rollenketten mit Winkellaschen

Roller chains with single hole bent attachments

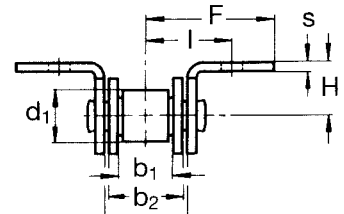
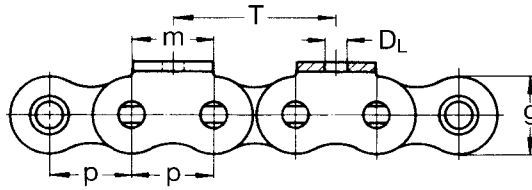


Ketten
Kugellager
Korsten

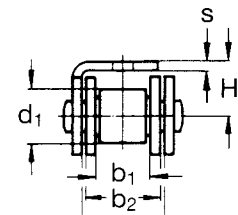
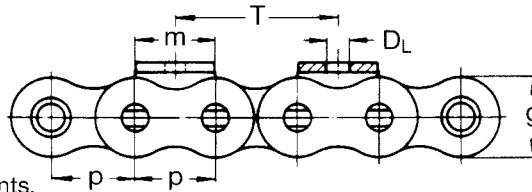
A
einseitige Winkellaschen
bent attachments,
one side



B
zweiseitige Winkellaschen
bent attachments,
both sides



C
Winkellaschen einseitig
übergreifend
bent over chain attachments,
one side



| WITRA® No. | Similar DIN/ISO No. | Teilung | | Innere Breite Inner width p | Innenglied- breite Inner link width b ₁ min. b ₂ max. | Rollen- Ø Roller- Ø d ₁ max. | Laschen- höhe Plate height g max. | Bruch- kraft Breaking load DIN F _B min. N | Mitnehmer-Maße | | | | | |
|--------------------|---------------------------|---------|-------|---|--|---|---|--|------------------------|----------------|------|------|-----|------|
| | | Pitch | | | | | | | Attachement dimensions | | | | | |
| | | mm | inch | | | | | | m | D _L | l | F | H | s |
| WT 05 | 05 B-1 | 8 | - | 3 | 4,77 | 5 | 7,1 | 5 000 | 8 | 3,2 | 6,6 | 12 | 5 | 0,8 |
| WT 06 ¹ | 06 B-1 | 9,525 | 3/8 | 5,72 | 8,53 | 6,35 | 8,2 | 9 000 | 8 | 3,5 | 9,5 | 13,5 | 6,5 | 1,25 |
| WT 08 | 08 B-1 | 12,7 | 1/2 | 7,75 | 11,3 | 8,51 | 11,8 | 18 000 | 12,5 | 4,5 | 13,1 | 19 | 10 | 1,5 |
| WT 10 | 10 B-1 | 15,875 | 5/8 | 9,65 | 13,28 | 10,16 | 14,7 | 22 400 | 15 | 5,5 | 16,7 | 27 | 10 | 1,7 |
| WT 12 | 12 B-1 | 19,05 | 3/4 | 11,68 | 15,62 | 12,07 | 16,1 | 29 000 | 18,5 | 6,6 | 18,6 | 29 | 11 | 1,8 |
| WT 16 | 16 B-1 | 25,4 | 1 | 17,02 | 25,4 | 15,88 | 21 | 60 000 | 25 | 9 | 28,9 | 41,8 | 18 | 3 |
| WT 20 | 20 B-1 | 31,75 | 1 1/4 | 19,56 | 29 | 19,05 | 26,4 | 95 000 | 35 | 9 | 33,4 | 50 | 18 | 3,75 |
| WT 24 | 24 B-1 | 38,1 | 1 1/2 | 25,4 | 37,9 | 25,4 | 33,4 | 160 000 | 38 | 11 | 44 | 64 | 25 | 5 |

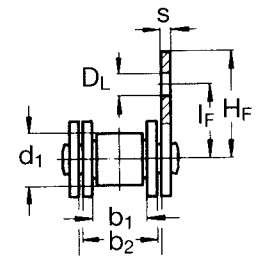
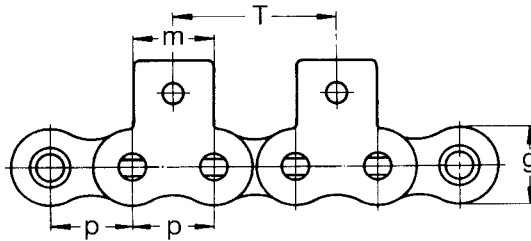
¹ nur mit geraden Laschen / ¹ with straight side plates only

Rollenketten mit Flachlaschen und Mitnehmerbolzen

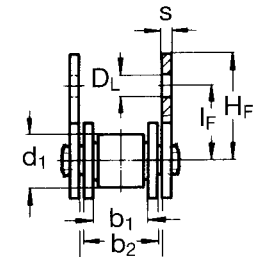
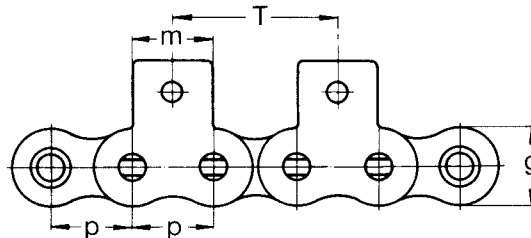
Roller chains with single hole straight attachments and extended pins



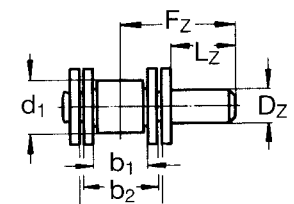
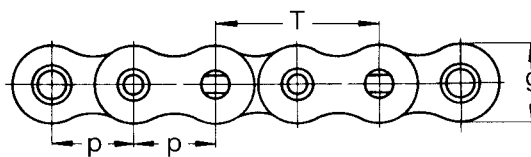
D
einseitige Flachlaschen
straight attachments,
one side



E
zweiseitige Flachlaschen
straight attachments,
both sides



F
einseitige Mitnehmerbolzen
(auch versetzt wechselseitig
möglich)
extended pins, available
on alternate sides

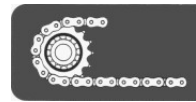


| WITRA® No. | Similar DIN/ISO No. | Teilung | | Innere Breite mm | Innen- glied- breite mm | Rollen- Ø mm | Laschen- höhe mm | Bruch- kraft N | Mitnehmer-Maße | | | | | | | | | | | | |
|--------------------------|---------------------------|---------|-------|------------------------|----------------------------------|--------------------|------------------------|----------------------|----------------------|------------------------------|--------------------|-----------------------|------------------------------|------------------------------|------------------------------|------------------------------|-----------------|-----------------------------|---------|----------------------|----------------------|
| | | Pitch | | | | | | | Inner width mm | Inner link width mm | Roller- Ø mm | Plate height mm | Breaking load DIN N | Attachement dimensions | | | | | | | |
| | | p mm | inch | | | | | | | | | | | b ₁ min. mm | b ₂ max. mm | d ₁ max. mm | g max. mm | F _B min. N | m mm | D _L mm | I _F mm |
| WT 05 | 05 B-1 | 8 | - | 3 | 4,77 | 5 | 7,1 | 5 000 | 8 | 3 | 7,5 | 13 | 0,8 | 4 | 10 | 13,3 | | | | | |
| WT 06¹ | 06 B-1 | 9,525 | 3/8 | 5,72 | 8,53 | 6,35 | 8,2 | 9 000 | 8 | 3,5 | 9 | 13,8 | 1,25 | 5 | 15 | 20,7 | | | | | |
| WT 08 | 08 B-1 | 12,7 | 1/2 | 7,75 | 11,3 | 8,51 | 11,8 | 18 000 | 12,5 | 4,5 | 14,7 | 20,3 | 1,5 | 6 | 15 | 22,4 | | | | | |
| WT 10 | 10 B-1 | 15,875 | 5/8 | 9,65 | 13,28 | 10,16 | 14,7 | 22 400 | 15 | 5,5 | 17,2 | 26,7 | 1,7 | 6,5 | 20 | 28,5 | | | | | |
| WT 12 | 12 B-1 | 19,05 | 3/4 | 11,68 | 15,62 | 12,07 | 16,1 | 29 000 | 18,5 | 6,6 | 18,7 | 29 | 1,8 | 7 | 20 | 29,8 | | | | | |
| WT 16 | 16 B-1 | 25,4 | 1 | 17,02 | 25,4 | 15,88 | 21 | 60 000 | 25 | 9 | 28,6 | 41,5 | 3 | 10 | 30 | 45,9 | | | | | |
| WT 20 | 20 B-1 | 31,75 | 1 1/4 | 19,56 | 29 | 19,05 | 26,4 | 95 000 | 35 | 9 | 30,5 | 45,7 | 3,75 | 12 | 30 | 48,4 | | | | | |
| WT 24 | 24 B-1 | 38,1 | 1 1/2 | 25,4 | 37,9 | 25,4 | 33,4 | 160 000 | 38 | 11 | 41 | 60 | 5 | 16 | 35 | 59,1 | | | | | |

¹ nur mit geraden Laschen / ¹ with straight side plates only

Rollenketten mit breiten Winkel- und Flachlaschen

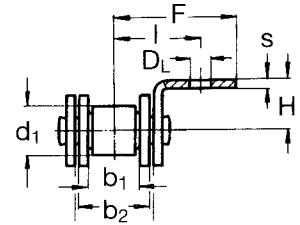
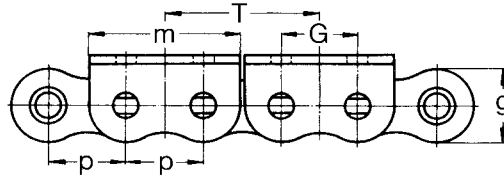
Roller chains with two hole bent and straight attachments



Ketten
Kugellager
Korsten

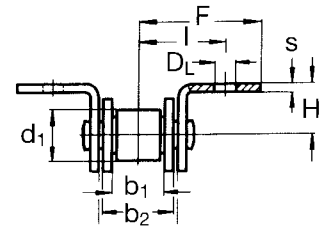
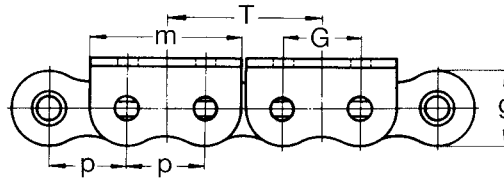
A 2

einseitige Winkelaschen
bent attachments,
one side



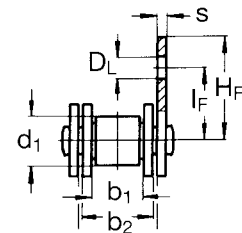
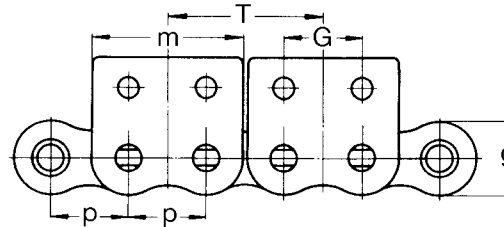
B 2

zweiseitige Winkelaschen
bent attachments,
both sides



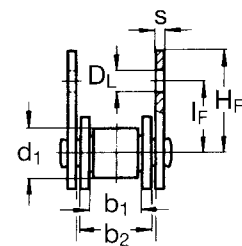
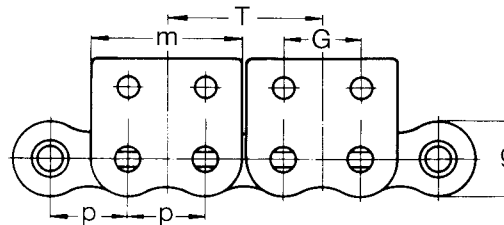
D 2

einseitige Flachaschen
straight attachments,
one side



E 2

zweiseitige Flachaschen
straight attachments,
both sides



| WITRA® No. | Similar DIN/ISO No. | Teilung | | Innere Breite mm | Innenglied- breite mm | Rollen- O mm | Laschen- höhe mm | Bruch- kraft N | Mitnehmer-Maße | | | | | | | | | | | | | | |
|--------------------|---------------------------|---------|-------|------------------------|-----------------------------|--------------------|------------------------|----------------------|----------------------|------------------------------|--------------------|-----------------------|------------------------------|------------------------------|------------------------------|------------------------------|-----------------|----------------------|---|----------------|---|---|---|
| | | Pitch | | | | | | | Inner width mm | Inner link width mm | Roller- O mm | Plate height mm | Breaking load DIN N | Attachment dimensions | | | | | | | | | |
| | | p | inch | | | | | | | | | | | b ₁ min. mm | b ₂ max. mm | d ₁ max. mm | g max. mm | F _B mm | m | D _L | G | I | F |
| WT 06 ¹ | 06 B-1 | 9,525 | 3/8 | 5,72 | 8,53 | 6,35 | 8,2 | 9 000 | 18,2 | 3,2 | 9,525 | 9,8 | 13,2 | 5,7 | 9,2 | 12,6 | 1,25 | | | | | | |
| WT 08 | 08 B-1 | 12,7 | 1/2 | 7,75 | 11,3 | 8,51 | 11,8 | 18 000 | 23,2 | 4,5 | 12,7 | 13,1 | 19 | 10 | 14,7 | 20,3 | 1,5 | | | | | | |
| WT 10 | 10 B-1 | 15,875 | 5/8 | 9,65 | 13,28 | 10,16 | 14,7 | 22 400 | 28,5 | 5,5 | 15,9 | 16,7 | 27 | 10 | 17,2 | 26,7 | 1,7 | | | | | | |
| WT 12 | 12 B-1 | 19,05 | 3/4 | 11,68 | 15,62 | 12,07 | 16,1 | 29 000 | 33,6 | 6,6 | 19,1 | 18,6 | 29 | 11 | 18,7 | 29 | 1,8 | | | | | | |
| WT 16 | 16 B-1 | 25,4 | 1 | 17,02 | 25,4 | 15,88 | 21 | 60 000 | 46,5 | 9 | 25,4 | 28,9 | 42 | 18 | 28,6 | 41,5 | 3 | | | | | | |
| WT 20 | 20 B-1 | 31,75 | 1 1/4 | 19,56 | 29 | 19,05 | 26,4 | 95 000 | 55,7 | 9 | 31,75 | 33,4 | 50 | 18 | 30,5 | 45,7 | 3,75 | | | | | | |
| WT 24 | 24 B-1 | 38,1 | 1 1/2 | 25,4 | 37,9 | 25,4 | 33,4 | 160 000 | 77 | 11 | 38,1 | 44 | 63 | 25 | 41 | 60 | 5 | | | | | | |

¹ nur mit geraden Laschen / ¹ with straight side plates only

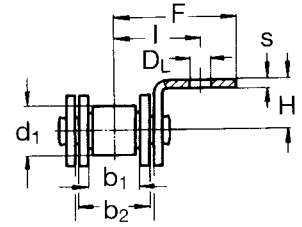
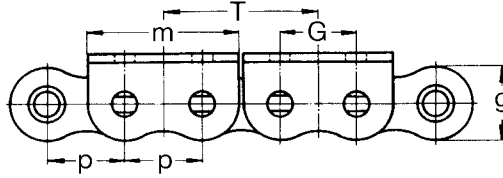
Rollenketten „rostfrei“ mit breiten Winkel- und Flachlaschen

Roller chains „stainless steel“ with two hole bent and straight attachments



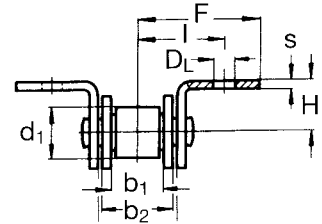
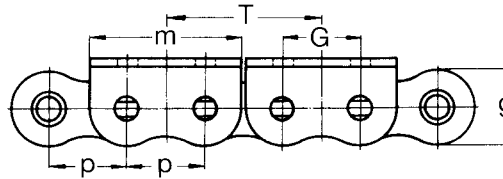
A 2

einseitige Winkelaschen
bent attachments,
one side



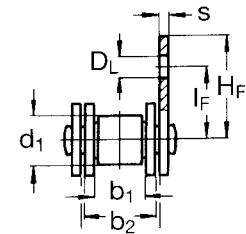
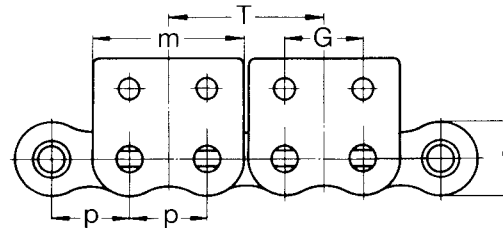
B 2

zweiseitige Winkelaschen
bent attachments,
both sides



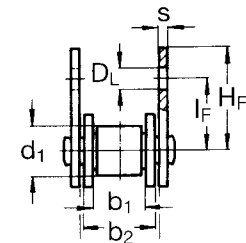
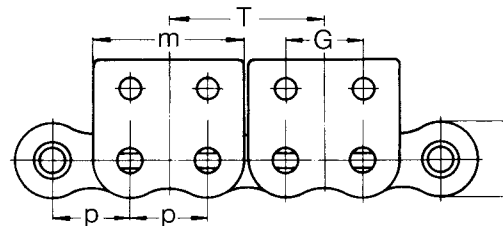
D 2

einseitige Flachaschen
straight attachments,
one side



E 2

zweiseitige Flachaschen
straight attachments,
both sides

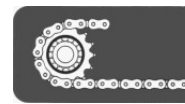


| WITRA® No. | Similar DIN/ISO No. | Teilung | | Innere Breite mm | Innen- glied- breite mm | Rollen- Ø mm | Laschen- höhe mm | Bruch- kraft N | Mitnehmer-Maße | | | | | | | | | |
|-----------------------|---------------------------|---------|------|------------------------|----------------------------------|--------------------|------------------------|------------------------------|------------------------|------|-------|------|------|-----|------|------|------|--|
| | | Pitch | | | | | | | Attachement dimensions | | | | | | | | | |
| | | mm | inch | Inner width mm | Inner link width mm | Roller- Ø mm | Plate height mm | Breaking load DIN N | m | DL | G | I | F | H | IF | HF | s | |
| WT 06 SS ¹ | 06B-1 | 9,525 | 3/8 | 5,72 | 8,53 | 6,35 | 8,2 | 7 000 | 18,2 | 3,22 | 9,525 | 9,8 | 13,2 | 5,7 | 9,2 | 12,6 | 1,25 | |
| WT 08 SS | 08B-1 | 12,7 | 1/2 | 7,75 | 11,3 | 8,51 | 11,8 | 12 000 | 23,2 | 4,5 | 12,7 | 13,1 | 19 | 10 | 14,7 | 20,3 | 1,6 | |
| WT 10 SS | 10B-1 | 15,875 | 5/8 | 9,65 | 13,28 | 10,16 | 14,7 | 14 500 | 28,5 | 5,5 | 15,9 | 16,7 | 27 | 10 | 17,2 | 26,7 | 1,7 | |
| WT 12 SS | 12B-1 | 19,05 | 3/4 | 11,68 | 15,62 | 12,07 | 16,1 | 18 500 | 33,6 | 6,6 | 19,1 | 18,5 | 29 | 11 | 18,7 | 29 | 1,8 | |
| WT 16 SS | 16B-1 | 25,4 | 1 | 17,02 | 25,4 | 15,88 | 21 | 40 000 | 46,5 | 10 | 25,4 | 28,9 | 41,8 | 18 | 28,6 | 41,5 | 3 | |

¹ nur mit geraden Laschen / ¹ with straight side plates only

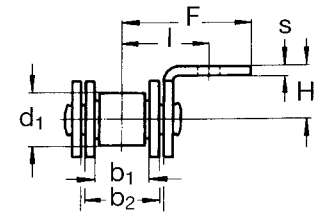
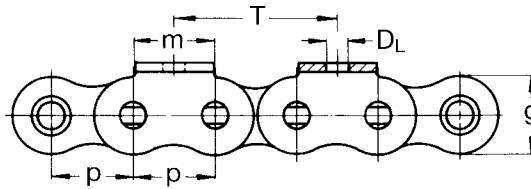
Rollenketten „rostfrei“ als Mitnehmerketten

Roller chains „stainless steel“ with one hole attachments

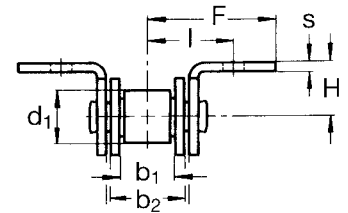
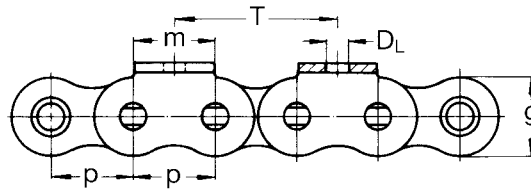


Ketten
Kugellager
Korsten

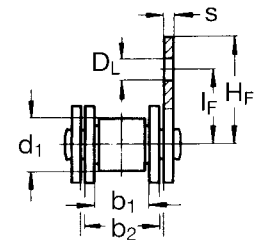
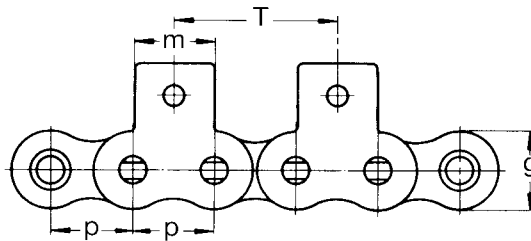
A
einseitige Winkelaschen
bent attachments,
one side



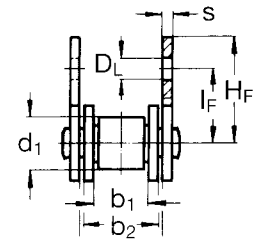
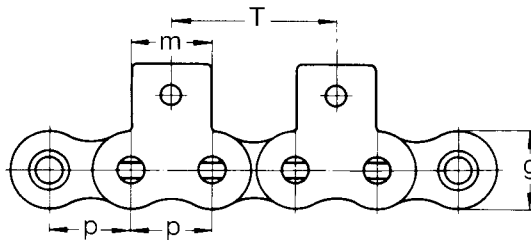
B
zweiseitige Winkelaschen
bent attachments,
both sides



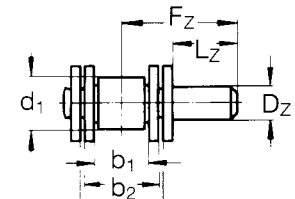
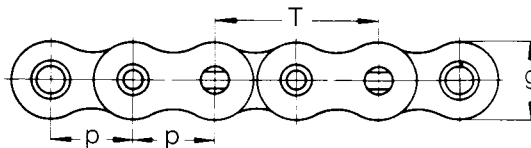
D
einseitige Flachlaschen
straight attachments,
one side



E
zweiseitige Flachlaschen
straight attachments,
both sides



F
einseitige Mitnehmerbolzen
(auch versetzt wechselseitig
möglich)
extended pins, available
on alternate sides



| WITRA® No. | Similar DIN/ISO No. | Teilung | | Innere Breite mm | Innen- glied- breite mm | Rollen- Ø mm | Laschen- höhe mm | Mitnehmer-Maße | | | | | | | | | | |
|-----------------------|---------------------------|-------------|---------------|------------------------------|----------------------------------|------------------------------|------------------------|-----------------------|----------------|------|------|-----|----------------|----------------|------|----------------------------------|----------------|----------------|
| | | Pitch mm | Pitch inch | | | | | Attachment dimensions | | | | | | | | | | |
| | | p | | b ₁ min. mm | b ₂ max. mm | d ₁ max. mm | g max. mm | m | D _L | l | F | H | I _F | H _F | s | D _Z h ₉ | L _Z | F _Z |
| WT 05 SS | 05 B-1 | 8 | - | 3 | 4,77 | 5 | 7,1 | 8 | 3,2 | 6,6 | 12 | 5 | 7,5 | 13 | 0,8 | 4 | 10 | 13,3 |
| WT 06 SS ¹ | 06 B-1 | 9,525 | 3/8 | 5,72 | 8,53 | 6,35 | 8,2 | 8 | 3,5 | 9,5 | 13,5 | 6,5 | 9 | 13,4 | 1,25 | 5 | 15 | 20,7 |
| WT 08 SS | 08 B-1 | 12,7 | 1/2 | 7,75 | 11,3 | 8,51 | 11,8 | 12,5 | 4,5 | 13,1 | 19 | 10 | 14,7 | 20,3 | 1,6 | 6 | 15 | 22,4 |
| WT 10 SS | 10 B-1 | 15,875 | 5/8 | 9,65 | 13,28 | 10,16 | 14,7 | 15 | 5,5 | 16,7 | 27 | 10 | 17,2 | 26,7 | 1,7 | 6,5 | 20 | 28,5 |
| WT 12 SS | 12 B-1 | 19,05 | 3/4 | 11,68 | 15,62 | 12,07 | 16,1 | 18,5 | 6,6 | 18,5 | 29 | 11 | 18,7 | 29 | 1,8 | 7 | 20 | 29,8 |
| WT 16 SS | 16 B-1 | 25,4 | 1 | 17,02 | 25,4 | 15,88 | 21 | 25 | 10 | 28,9 | 41,8 | 18 | 28,6 | 41,5 | 3 | 10 | 30 | 45,9 |

¹ nur mit geraden Laschen / ¹ with straight side plates only